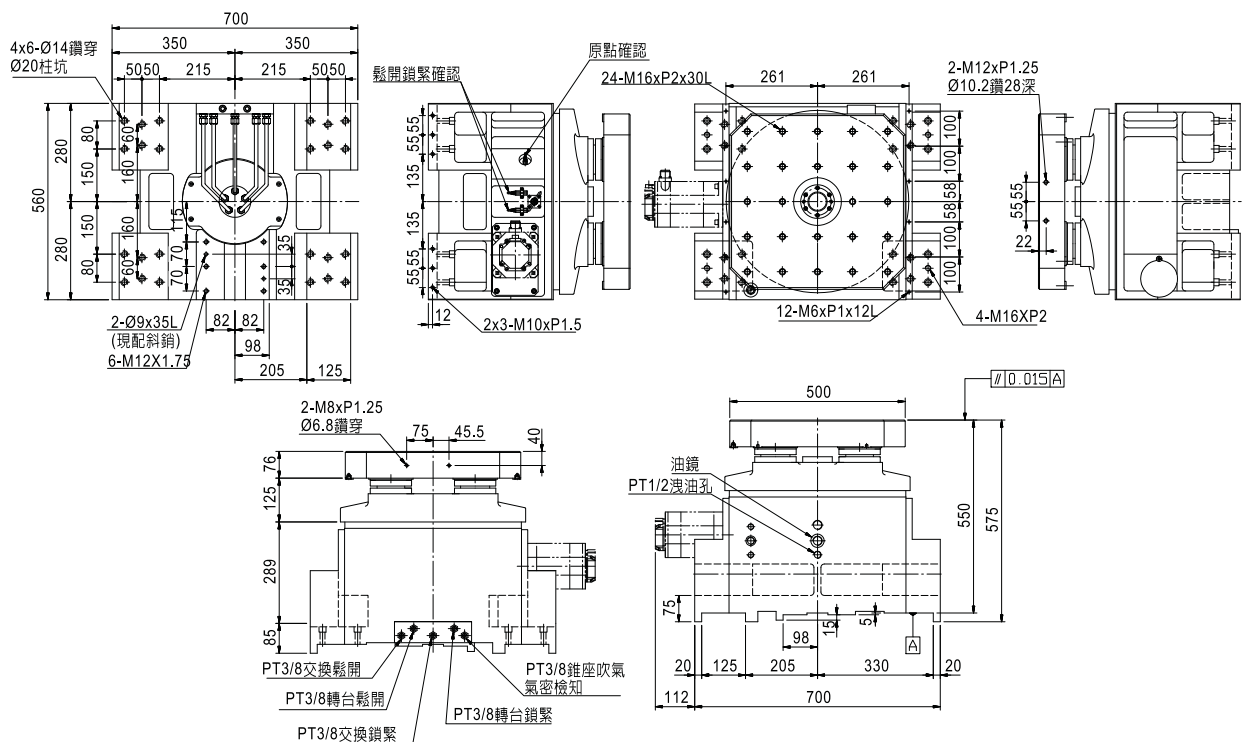


- ◎ High accuracy and tested modular system for Table (Receiver) & sigle/Multi Pallets design. Especially suitable for new Horizontal Machining Centers as well as for existing Customers' Design Horizontal Table/Pallets manufacturing.
- ◎ TAI units Table(Reveiver) & sigle/Multi Pallets are manufactured from high quality materials and workmanship. Every Table has Running/Accuracy testing for at least 48 hours. All electrical parts are imported from Japan/Germany for performance confidence.
- ◎ Can be finished according to DIN, ISO or Customers' design, All pallets are exchangeable for every Index Tables or CNC Tables (Receivers) Pallets changing type can be Swing or Forward/Backward designed.
- ◎ By high accuracy 4 pcs Cones/Cups.
- ◎ By Hydraulic 4 pcs Pull Studs or Clamping Plate.
- ◎ Can be designed by customers' drawings Saddle.
- ◎ 1 degree or 0.001 degree increment are optional Can be choosed by customers' request. +/- 2 sec. or +/- 3 sec.(APR series:encoder is required)

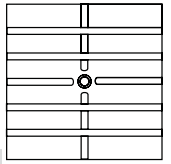
ITEM / MODEL	APCR/APCI 400	APCR/APCI 500	APCR/APCI 630	APCR/APCI 800	APCR/APCI 1000
Pallet Dimensions (mm)	400	500	630	800	1000
T-slots Size (mm)	14	14	18	22	22
Rounded Corners (mm)	500	628	800	1040	1570
Total Height (mm)	370	550	505	525	550
Clamping Station Weight (kgs)	365	600	750	900	1100
Pallet Weight (kgs)	75	120	170	200	300
Max. Loading (kgs)(evenly distributed)	500	600	1200	2000	3000
Clamping Force (kgs)	3500	5500	6500	7000	8000
Machining Torque (kg/m)	122	230	330	350	450
Parallelism (mm)	0.015	0.015	0.025	0.03	0.03
Repeatability (mm)	0.01	0.01	0.01	0.01	0.01

※ All specifications can be modified according to customers' requirement.

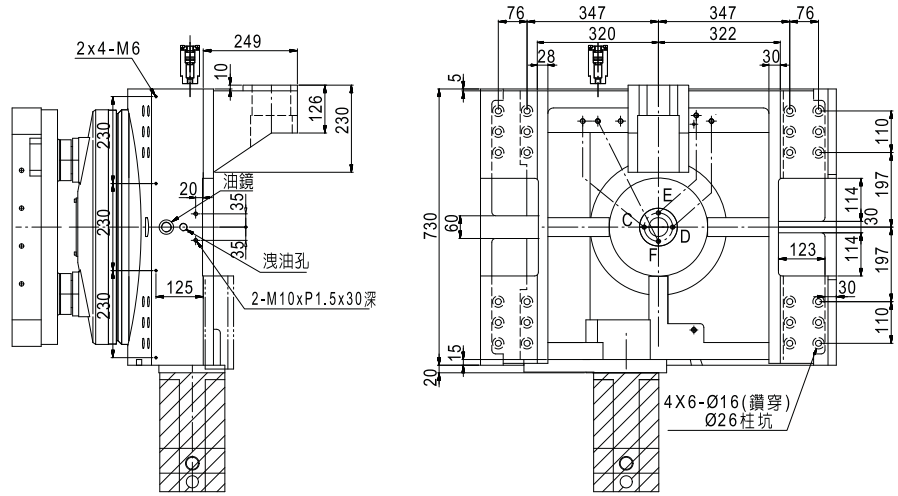
APCI-500



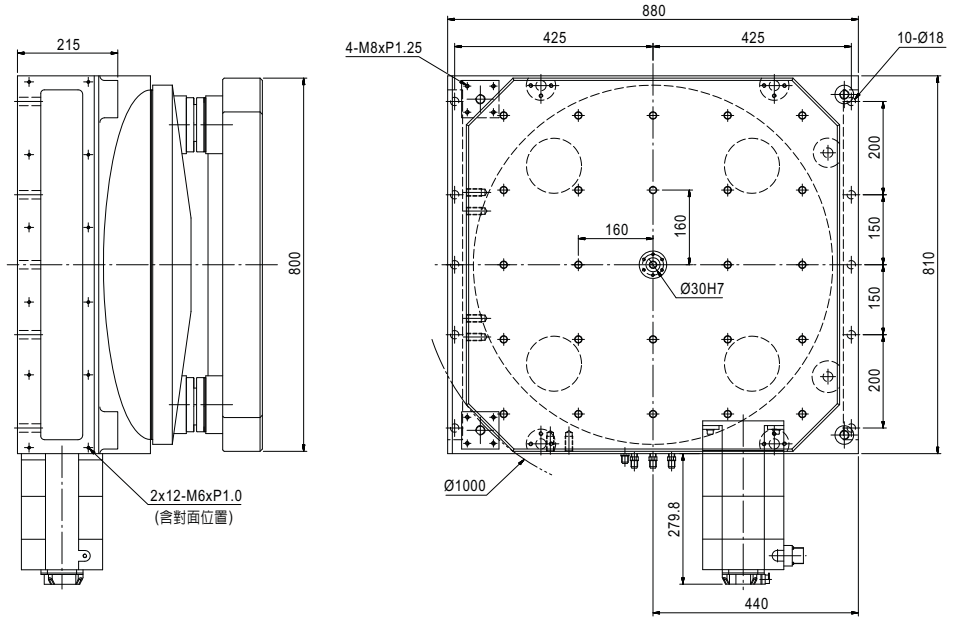
Horizontal Machining Center Table With Pallets



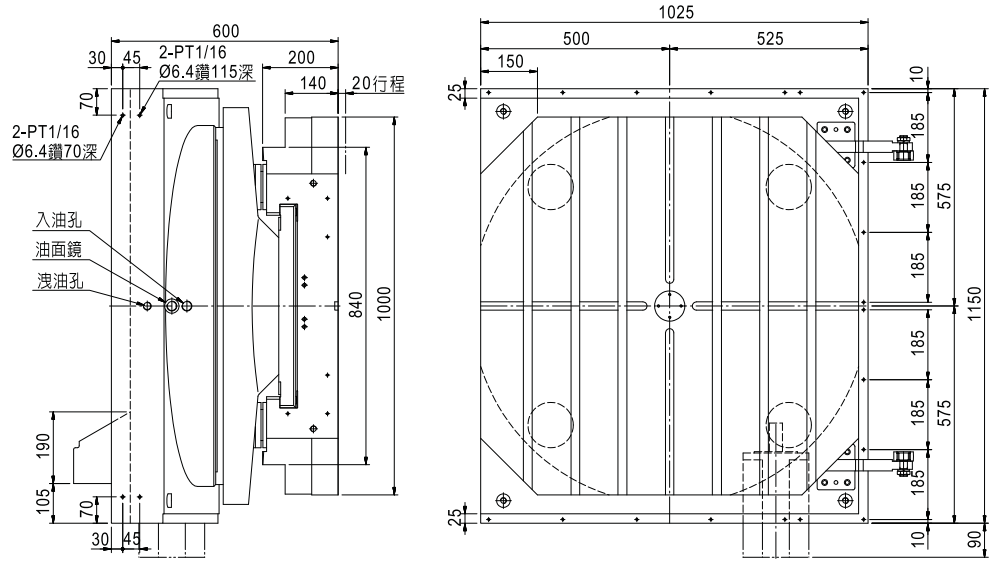
APCR-630



APCR-800



APCR-1000



APCR / APCI