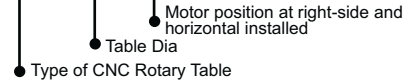




- ⊙ A combination of high precision bronze / nickel worm wheel and case hardened steel worm screw ensures long term indexing accuracy.
- ⊙ Dual lead worm wheel/worm shaft which allow easy backlash adjustment.
- ⊙ Double bearing design suitable for heavy cutting.
- ⊙ One piece of faceplate and spindle design which offer rigid construction.
- ⊙ Low Gear ratio design (90:1) which offer high speed feed rate.
- ⊙ **Large thru hole design** which allow large work piece going thru spindle.

MODEL NO : **CNC-320 R/L**



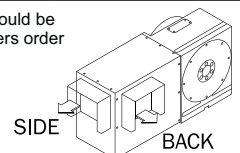
ITEM / MODEL		CNC-120R	CNC-170R	CNC-200R	CNC-250R	CNC-320R
Table Dia (mm/inch)		120 / 4.72	170 / 6.69	200 / 7.87	250 / 9.84	320 / 12.60
Center Height in Vertical (mm / inch)		115 / 4.53	135 / 5.31	160 / 6.3	185 / 7.28	210 / 8.27
Table Height in Horizontal (mm / inch)		170 / 6.69	165 / 6.5	165 / 6.5	200 / 7.87	240 / 9.45
Over all Height in Vertical Without Motor Cover (mm / inch)		193 / 7.60	240 / 9.45	265 / 10.63	315 / 12.4	380 / 14.96
Thru-Hole Dia (mm / inch)		30 ^{H7} / 1.18 ^{H7}	35 ^{H7} / 1.37 ^{H7}	35 ^{H7} / 1.37 ^{H7}	70 ^{H7} / 2.75 ^{H7}	110 ^{H7} / 4.33 ^{H7}
Width of T-slot (mm / inch)		10 ^{H7} / 0.39 ^{H7}	12 ^{H7} / 0.47 ^{H7}	12 ^{H7} / 0.47 ^{H7}	12 ^{H7} / 0.47 ^{H7}	14 ^{H7} / 0.55 ^{H7}
Width of Guide Block (mm / inch)		14 ^{H7} / 0.55 ^{H7}	18 ^{H7} / 0.71 ^{H7}	18 ^{H7} / 0.71 ^{H7}	18 ^{H7} / 0.71 ^{H7}	18 ^{H7} / 0.71 ^{H7}
Servo motor type	MELDAS	HF-75T	HF-104T	HF-104T	HF-104T / HF-154T	HF-204S
	FANUC	α2 i	α4 i	α4 i	α4 i / α8 i	α12 i
	SIEMENS	1FK7042	1FK7060	1FK7060	1FK7060 / 1FK7063	1FK7083
	HEIDENHAIN	QSY96A	QSY116C	QSY116C	QSY116C / QSY116E	QSY155B
Gear Ratio		1:60	1:90	1:90	1:180/1:90	1:180/1:90
Min. Indexing Unit degree (degree)		0.001°	0.001°	0.001°	0.001°	0.001°
Max. R.P.M. (rpm) (motor : 2000 / rpm)		33.3	22.2	22.2	11.1/22.2	11.1/22.2
Pneu. clamp force (kg•m) (P:5kg / cm ²)		12	25	25	47	71
Hydro. clamp force (kg•m) (P:20kg / cm ²)		24	50	50	94	142
Indexing Accuracy Class (sec.)		60"	20"	20"	15"	15"
		High Accuracy Rotary Table Refer to P39 chart 2				
Repeatability (sec.)	Unidirectional	4"	4"	4"	4"	4"
	Bidirectional	8"	8"	8"	8"	8"
Max. Machining Force (kg•m)		12	23	23	45	78
N.W. (kgs)		28	70	84	124	210
Max. Load	Vertical	W=35 kg	W=75 kg	W=100 kg	W=125 kg	W=150 kg
	Horizontal	W=75 kg	W=150 kg	W=200 kg	W=300 kg	W=350 kg
Max. Radial Load		F=600 kg	F=800 kg	F=822 kg	F=1208 kg	F=1375kg
		FxL=6 kg•m	FxL=11.2 kg•m	FxL=13 kg•m	FxL=18.2 kg•m	FxL=26 kg•m
		FxL=12 kg•m	FxL=40 kg•m	FxL=50 kg•m	FxL=72 kg•m	FxL=92 kg•m

※ All specifications can be modified according to customers' requirement.

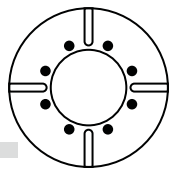
- Up & backside cable outlet is available, slant motor cover also available
- Standard accessory : eye bolts, clamping blocks

- ⊙ Adapting Tailstock → Refer to P : 19-21
- ⊙ To match AC-/DC-/Stepping-Controller → Refer to P : 33-35
- ⊙ Optional accessories → Refer to P : 38

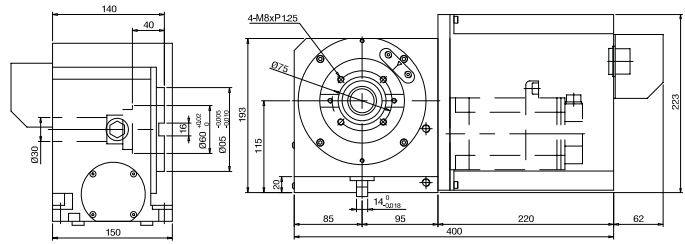
● Outlet of wire box could be decided by customers order



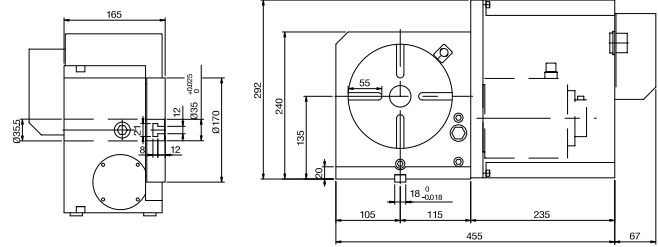
CNC-120R, 170R, 200R, 250R, 320R CNC Rotary Table



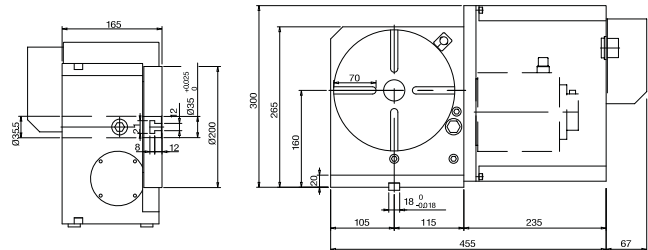
CNC-120R



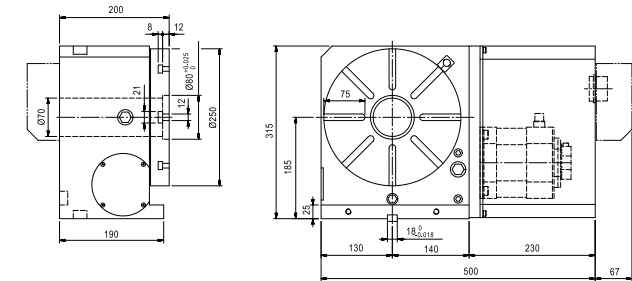
CNC-170R



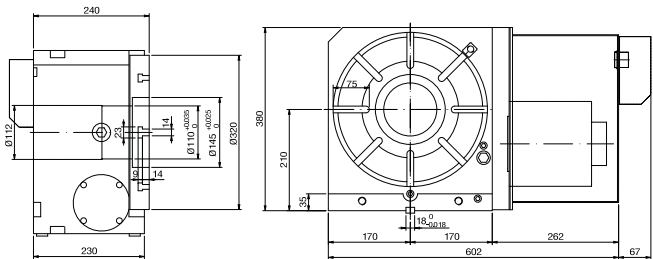
CNC-200R



CNC-250R



CNC-320R



NOTE : Difference motor becomes difference length of motor cover

Accuracy Standards

Unit:mm

ITEM	Table top flatness	Parallelism of table top and frame bottom	Runout of table spindle center	Perpendicularity of table top to frame bottom	Table top runout	Perpendicularity of table top to frame bottom guide block	Parallelism of center line between headstock & tailstock to frame bottom guide block
CNC-120R	0.01	0.01	0.015	0.012	0.01	0.02	0.02
CNC-170R	0.01	0.01	0.01	0.02	0.015	0.02	0.02
CNC-200R	0.01	0.01	0.01	0.02	0.015	0.02	0.02
CNC-250R	0.01	0.01	0.01	0.02	0.015	0.02	0.02
CNC-320R	0.01	0.01	0.01	0.02	0.015	0.02	0.02



- ⊙ A combination of high precision bronze / nickel worm wheel and case hardened steel worm screw ensures long term indexing accuracy.
- ⊙ Dual lead worm wheel/worm shaft which allowable easy backlash adjustmen.
- ⊙ Double bearing design suitable for heavy cutting.
- ⊙ One piece of faceplate and spindle design which offer rigid construction.
- ⊙ Low Gear ratio design (90:1) which offer high speed feed rate.
- ⊙ **Large thru hole design** which allowable large work piece going thru spindle.

MODEL NO : **CNC-400 R/L**

- Motor position at right-side and horizontal installed.
- Table Dia.
- Type of CNC Rotary Table

ITEM / MODEL		CNC-400R	CNC-500R	CNC-630R	CNC-800R
Table Dia (mm/inch)		400 / 15.75	500 / 19.69	630 / 24.8	800 / 31.5
Center Height in Vertical (mm / inch)		250 / 9.84	310 / 12.20	400 / 15.75	480 / 18.90
Table Height in Horizontal (mm / inch)		250 / 9.84	290 / 11.42	320 / 12.60	340 / 13.39
Over all Height in Vertical Without Motor Cover (mm / inch)		460 / 18.11	570 / 22.44	725 / 28.54	880 / 34.65
Thru-Hole Dia (mm / inch)		150 ^{H7} / 5.9 ^{H7}	180 ^{H7} / 7.09 ^{H7}	254 ^{H7} / 10 ^{H7}	254 ^{H7} / 10 ^{H7}
Width of T-slot (mm / inch)		14 ^{H7} / 0.55 ^{H7}	18 ^{H7} / 0.71 ^{H7}	18 ^{H7} / 0.71 ^{H7}	20 ^{H7} / 0.79 ^{H7}
Width of Guide Block (mm / inch)		18 ^{H7} / 0.71 ^{H7}	18 ^{H7} / 0.71 ^{H7}	18 ^{H7} / 0.71 ^{H7}	22 ^{H7} / 0.87 ^{H7}
Servo motor type	MELDAS	HF-204S	HF-204S / HF-354S	HF-354S	HF-354S
	FANUC	α12 i	α12 i / α22 i	α22 i	α22 i
	SIEMENS	1FK7083	1FK7083 / 1FK7101	1FK7101	1FK7101
	HEIDENHAIN	QSY155B	QSY155B / QSY155D	QSY155D	QSY155D
Gear Ratio		1:90	1:120	1:180	1:180
Min. Indexing (degree)		0.001°	0.001°	0.001°	0.001°
Max. R.P.M. (rpm) (motor : 2000 / rpm)		22.2	16.7	11.1	11.1
Pneu. clamp force (kg•m) (P:5kg / cm ²)		92	125	350	430
Hydro. clamp force (kg•m) (P:20kg / cm ²)		184	250	700	1050
Indexing Accuracy Class (sec.)		A	15"	A	15"
		High Accuracy Rotary Table Refer to P39 chart 2			
Repeatability (sec.)	Unidirectional	4"	4"	4"	4"
	Bidirectional	8"	8"	8"	8"
Max. Machining Force (kg•m)		160	230	320	350
N.W. (kgs)		280	380	860	1200
Max. Load	Vertical	W=300 kg	W=350 kg	W=400 kg	W=500 kg
	Horizontal	W=500 kg	W=600 kg	W=800 kg	W=1000 kg
Max. Radial Load		F=1585 kg	F=1880 kg	F=2080 kg	F=2600 kg
		FxL=36 kg•m	FxL=89 kg•m	FxL=185 kg•m	FxL=230 kg•m
		FxL=122 kg•m	FxL=165 kg•m	FxL=228 kg•m	FxL=285 kg•m

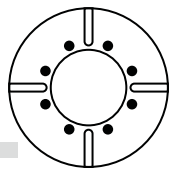
※ All specifications can be modified according to customers' requirement.

- Up & backside cable outlet is available, slant motor cover also available
- Standard accessory : eye bolts, clamping blocks

- ⊙ Adapting Tailstock→ Refer to P : 19-21
- ⊙ To match AC-/DC-/Stepping-Controller→ Refer to P : 33-35
- ⊙ Optional accessories→ Refer to P : 38

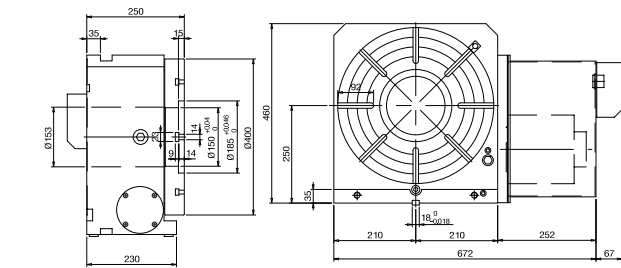


CNC-400R, 500R, 630R, 800R CNC Rotary Table

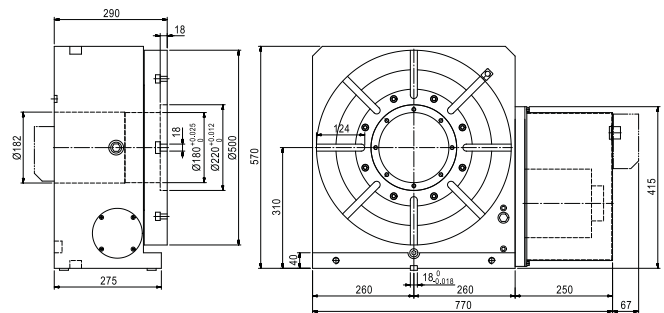


CNC

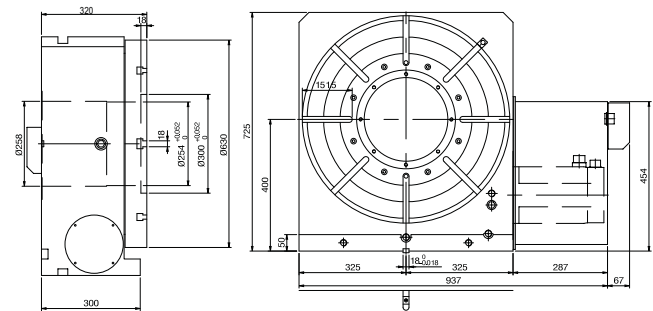
CNC-400R



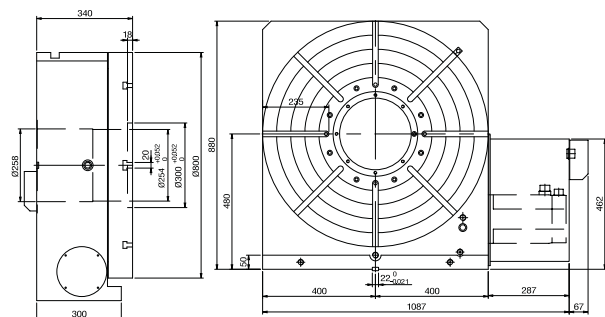
CNC-500R



CNC-630R



CNC-800R



Accuracy Standards

Unit:mm

ITEM	Table top flatness	Parallelism of table top and frame bottom	Runout of table spindle center	Perpendicularity of table top to frame bottom	Table top runout	Perpendicularity of table top to frame bottom guide block	Parallelism of center line between headstock & tailstock to frame bottom guide block
CNC-400R	0.015	0.015	0.01	0.02	0.015	0.02	0.02
CNC-500R	0.015	0.015	0.01	0.02	0.015	0.02	0.02
CNC-630R	0.025	0.025	0.01	0.025	0.02	0.02	0.02
CNC-800R	0.025	0.025	0.01	0.025	0.02	0.02	0.02

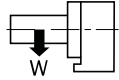
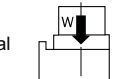
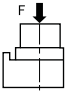
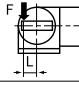
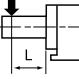


- ⊙ Back-Mounted Motor, avoid the interference with M/C splash guard.
- ⊙ Suitable for small-size of CNC Machining / Tapping-Center.

※This model can not be installed for horizontal use※

MODEL NO : **CNC-170 RB**

- Back-Mounted Motor
- Table Dia.
- Type of CNC Rotary Table

ITEM / MODEL		CNC-120RB	CNC-170RB	CNC-200RB	CNC-250RB				
Table Dia (mm/inch)		120 / 4.72	170 / 6.69	200 / 7.87	250 / 9.84				
Center Height in Vertical (mm / inch)		115 / 4.53	135 / 5.31	160 / 6.3	185 / 7.28				
Over all Height in Vertical (mm/ inch)		250 / 9.84	300 / 11.81	325 / 12.5	365 / 14.37				
Thru-Hole Dia (mm / inch)		30 ^{H7} / 1.18 ^{H7}	35 ^{H7} / 1.38 ^{H7}	35 ^{H7} / 1.38 ^{H7}	52 ^{H7} / 2.05 ^{H7}				
Width of T-slot (mm / inch)		10 ^{H7} / 0.39 ^{H7}	12 ^{H7} / 0.47 ^{H7}	12 ^{H7} / 0.47 ^{H7}	12 ^{H7} / 0.47 ^{H7}				
Width of Guide Block (mm / inch)		14 ^{H7} / 0.55 ^{H7}	18 ^{H7} / 0.71 ^{H7}	18 ^{H7} / 0.71 ^{H7}	18 ^{H7} / 0.71 ^{H7}				
Servo motor type	MELDAS	HF-75T	HF-104T	HF-104T	HF-104T				
	FANUC	α2 i	α4 i	α4 i	α4 i				
	SIEMENS	1FK7042	1FK7060	1FK7060	1FK7060				
	HEIDENHAIN	QSY96A	QSY116C	QSY116C	QSY116C				
Gear Ratio		1:60	1:90	1:90	1:90				
Min. Indexing (degree)		0.001°	0.001°	0.001°	0.001°				
Max. R.P.M. (rpm) (motor : 2000 / rpm)		33.3	22.2	22.2	22.2				
Pneu. clamp force (kg•m) (P:5kg / cm ²)		12	25	25	47				
Hydro. clamp force (kg•m) (P:20kg / cm ²)		24	50	50	94				
Indexing Accuracy Class (sec.)		A	60"	A	20"	A	20"	A	15"
		High Accuracy Rotary Table Refer to P39 chart 2							
Repeatability (sec.)	Unidirectional	4"	4"	4"	4"				
	Bidirectional	8"	8"	8"	8"				
Max. Machining Force (kg•m)		12	23	23	45				
N.W. (kgs)		70	70	84	124				
Max. Load	Vertical 	W=35 kg	W=75 kg	W=100 kg	W=125 kg				
	Horizontal 	W=75 kg	W=150 kg	W=200 kg	W=300 kg				
Max. Radial Load		F=600 kg	F=800 kg	F=822 kg	F=1208 kg				
		FxL=6 kg•m	FxL=11.2 kg•m	FxL=13 kg•m	FxL=18.2 kg•m				
		FxL=12 kg•m	FxL=40 kg•m	FxL=50 kg•m	FxL=72 kg•m				

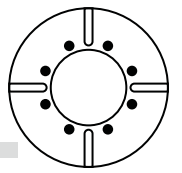
※ All specifications can be modified according to customers' requirement.

- Up & backside cable outlet is available, slant motor cover also available
- Standard accessory : eye bolts, clamping blocks

- ⊙ Adapting Tailstock→ Refer to P : 19-21
- ⊙ To match AC-/DC-/Stepping-Controller→ Refer to P : 33-35
- ⊙ Optional accessories→ Refer to P : 38

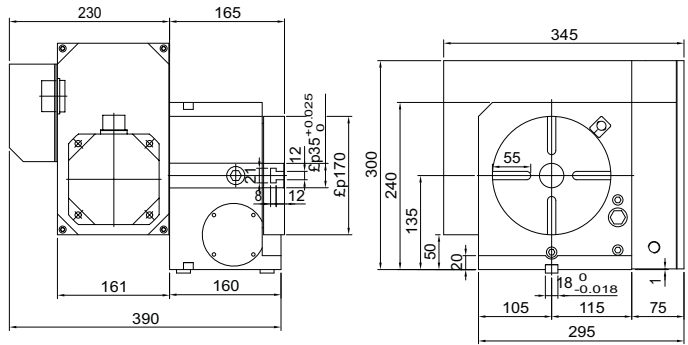


CNC-120RB, 170RB, 200RB, 250RB CNC Rotary Table

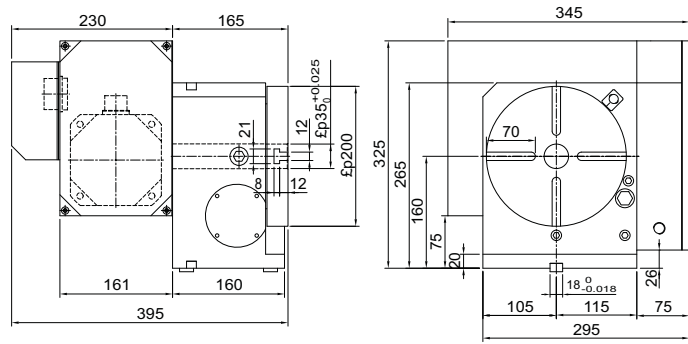


CNC

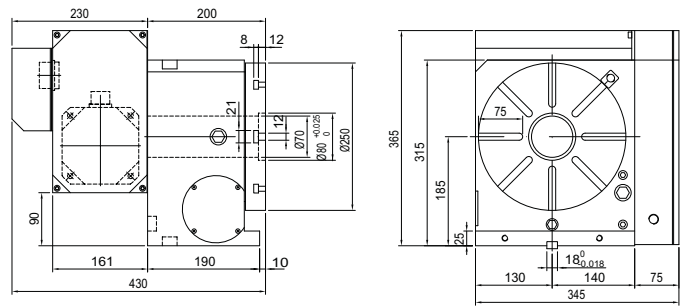
CNC-170RB



CNC-200RB



CNC-250RB



Accuracy Standards Unit:mm

ITEM	Table top flatness	Parallelism of table top and frame bottom	Runout of table spindle center	Perpendicularity of table top to frame bottom	Table top runout	Perpendicularity of table top to frame bottom guide block	Parallelism of center line between headstock & tailstock to frame bottom guide block
MODEL							
CNC-120RB	0.01	0.01	0.01	0.02	0.015	0.02	0.02
CNC-170RB	0.01	0.01	0.01	0.02	0.015	0.02	0.02
CNC-200RB	0.01	0.01	0.01	0.02	0.015	0.02	0.02
CNC-250RB	0.01	0.02	0.01	0.02	0.015	0.02	0.02



- ⊙ Double productivity, decreasing machining-time and cost.
- ⊙ Multi-Points pneumatic brake system offers superior clamp torque, insures smooth machining without deflection under a heavy load.
- ⊙ Increasing machining speed, reduce the time on rotating ATC and workpiece loading-unloading.

MODEL NO : **CNC-200R 3W**



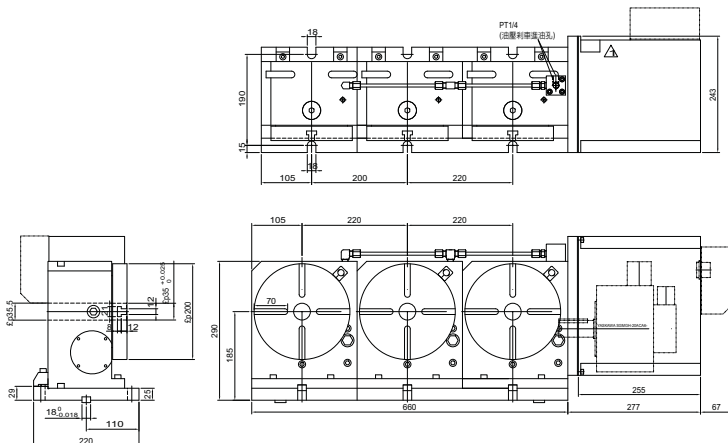
ITEM / MODEL		CNC-200R-3W(2W)			
Table Dia (mm/inch)		200 / 7.87			
Center Height in Vertical (mm / inch)		190 / 7.48			
Table Height in Horizontal (mm/ inch)		290 / 11.42			
Over all Height in Vertical Without Motor Cover (mm / inch)		315 / 12.40			
Thru-Hole Dia (mm / inch)		35 ^{H7} / 1.38 ^{H7}			
Width of T-slot (mm / inch)		12 ^{H7} / 0.47 ^{H7}			
Width of Guide Block (mm / inch)		18 ^{H7} / 0.71 ^{H7}			
Servo motor type	MELDAS	SIEMENS	HF-154T	1FK7063	
	FANUC	HEIDENHAIN	α8 i	QSY116C	
Max. Load	Vertical	W=100 kg			
	Horizontal	W=200 kg			

ITEM / MODEL		CNC-200R-3W	
Gear Ratio		90:1	
Min. Increment(degree)		0.001°	
Max. R.P.M. (rpm) (motor : 2000 / rpm)		22.2	
Pneu. clamp force (kg•m) (P:5kg / cm ²)		25	
Hydro. clamp force (kg•m) (P:20kg / cm ²)		50	
Indexing Accuracy Class (sec.)		15"	
Repeatability (sec.)		Unidirectional 4"	Bidirectional 8"
Max. Machine Force (kg•m)		23	
N. W. (kgs)		270	
Max. Radial Load		W=822 kg	
		FxL=13 kg•m	
		FxL=13 kg•m	

Accuracy Standards								Unit:mm
ITEM	Table top flatness	Parallelism of table top and frame bottom	Runout of table spindle center	Perpendicularity of table top to frame bottom	Table top runout	Perpendicularity of table top to frame bottom guide block	Parallelism of center line between headstock & tailstock to frame bottom guide block	
MODEL								
CNC-200R-3W	0.01	0.02	0.01	0.012	0.015	0.02	0.02	

※ All specifications can be modified according to customers' requirement.
 ※ Standard aessory : eye bolts, clamping blocks.

CNC-200R-3W



CNC-200R-2W

