



- ⊙ Build-in 3pcs hirth coupling, ensure the indexing accuracy +/- 5 sec.
- ⊙ Could be direct connected to the 4th. axis on machining-center. Also could be connected the M-code by using G.S. single axis AC/DC/Stepping servo controller.
- ⊙ Compact design, adapting precision bearing, ensure rigidity and long-term operation.
- ⊙ Build-in 3 pieces hirth coupling, table will not lifting-up during rotating.

## MODEL NO : **NCF-250**

● Table Dia.  
● Type of NC Face Gear Indexer



3 PCS hirth coupling

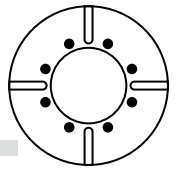
ITEM / MODEL		NCF-250R	NCF-320R	NCF-400R	NCF-500R
Table Dia (mm / inch)		ø250 / ø9.84	ø320 / ø12.6	ø400 / ø15.75	ø500 / ø19.69
Center Height in Vertical (mm / inch)		185 / 7.28	210 / 8.27	250 / 9.83	310 / 12.21
Table Height in Horizontal (mm / inch)		200 / 7.87	240 / 9.45	250 / 9.83	305 / 12.01
Over all Height in Vertical Without Motor Cover(mm / inch)		315 / 12.40	380 / 14.96	460 / 18.11	560 / 22.05
Thru-Hole Dia (mm / inch)		30 <sup>H7</sup> / 1.8 <sup>H7</sup>	80 <sup>H7</sup> / 3.15 <sup>H7</sup>	70 <sup>H7</sup> / 2.76 <sup>H7</sup>	80 <sup>H7</sup> / 3.15 <sup>H7</sup>
Width of T-slot (mm / inch)		12 <sup>H7</sup> / 0.47 <sup>H7</sup>	14 <sup>H7</sup> / 0.55 <sup>H7</sup>	14 <sup>H7</sup> / 0.55 <sup>H7</sup>	14 <sup>H7</sup> / 0.55 <sup>H7</sup>
Width of Guide Block (mm / inch)		18 <sup>H7</sup> / 0.71 <sup>H7</sup>	18 <sup>H7</sup> / 0.71 <sup>H7</sup>	18 <sup>H7</sup> / 0.71 <sup>H7</sup>	18 <sup>H7</sup> / 0.71 <sup>H7</sup>
Servo Motor type	MELDAS	HF-154T	HF-204S	HF-204S	HF-204S
	FANUC	α8 i	α12 i	α12 i	α12 i
	SIEMENS	1FK7063	1FK7083	1FK7083	1FK7083
	HEIDENHAIN	QSY116E	QSY155B	QSY155B	QSY155B
Gear Ratio		1:90	1:90	1:90	1:180
Min. increment (degree)		1° or 5°	1° or 5°	1° or 5°	1° or 5°
Max. R.P.M. (rpm) (motor : 2000/ rpm)		22.2	22.2	22.2	11.1
Repeatability (sec.)	Unidirectional	1"	1"	1"	1"
	Bidirectional	2"	2"	2"	2"
N.W.(kgs)		110	240	280	320
Clamp Torque (kg•m)		500	500	600	700
Load capacity in vertical (with tailstock) (kgs)		250	400	500	600

ITEM / MODEL	Max. Load		Max. Radial Load			Max. Working Inertia	Spindle Drive Torque
	Vertical	Horizontal	F	F	F	$J = \frac{WD^2}{(8 \times 980)}$	F
NCF-250R	W=125 kg	W=300 kg	F=3500kg	FxL=220 kg•m	FxL=140 kg•m	24kg•cm•sec <sup>2</sup>	13.5 kg•m
NCF-320R	W=150 kg	W=350 kg	F=5000kg	FxL=500 kg•m	FxL=400 kg•m	102kg•cm•sec <sup>2</sup>	54 kg•m
NCF-400R	W=250 kg	W=500 kg	F=6000kg	FxL=600 kg•m	FxL=400 kg•m	102kg•cm•sec <sup>2</sup>	54 kg•m
NCF-500R	W=400 kg	W=600 kg	F=7000kg	FxL=700 kg•m	FxL=400 kg•m	102kg•cm•sec <sup>2</sup>	54 kg•m

※ All specifications can be modified according to customers' requirement.

- Up & backside cable outlet is available, slant motor cover also available.
- Requested pneumatic source : 5 kg•cm<sup>2</sup> : hydraulic source : 20 kg•cm<sup>2</sup>
- Standard accessory: eye bolts, clamping blocks

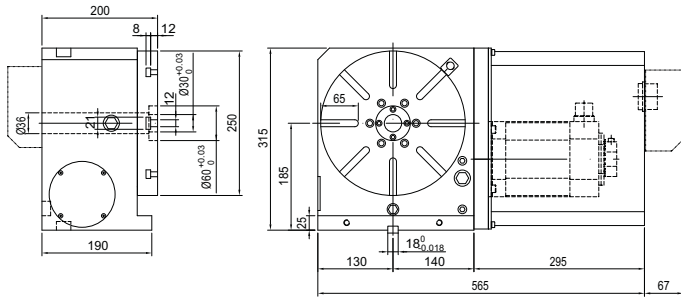
# NCF-250R, 320R, 400R, 500R NC Face Gear Indexer



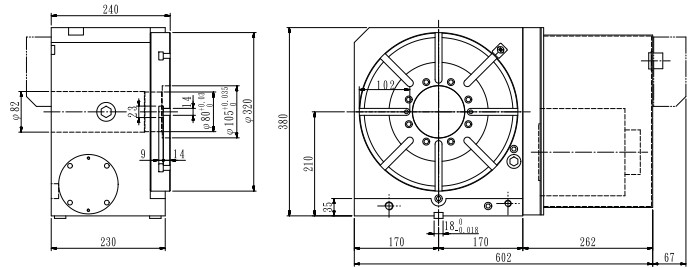
Accuracy Standards							Unit:mm
ITEM	Table top flatness	Parallelism of table top and frame bottom	Runout of table spindle center	Perpendicularity of table top to frame bottom	Table top runout	Perpendicularity of table top to frame bottom guide block	Parallelism of center line between headstock & tailstock to frame bottom guide block
MODEL							
NCF-250R	0.01	0.01	0.01	0.015	0.01	0.02	0.02
NCF-320R	0.01	0.01	0.01	0.015	0.01	0.02	0.02
NCF-400R	0.015	0.015	0.01	0.02	0.015	0.02	0.02
NCF-500R	0.015	0.015	0.01	0.02	0.015	0.02	0.02

- ◎ Adapting Tailstock→ Refer to P : 19-21
- ◎ To match AC-/DC-/Stepping-Controller→ Refer to P : 33-35

## NCF-250R



## NCF-320R



## NCF-400R

