



- ⊙ Suitable for conventional Milling, Boring and Tapping Machine.
- ⊙ Suitable to E.D.M. machine, for machining workpieces of wheel-moulding machine of bicycle, motorcycle.
- ⊙ Manual tilting, Rotating by CNC control.

MODEL NO : **CNCMT-320**

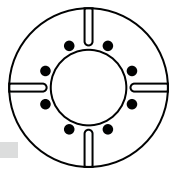
- Table Dia.
- CNCMT: Type of Manual Tilting Rotary Table
- TNC: Type of Tilting Dividing Head

ITEM / MODEL		CNCMT-200	CNCMT-250	CNCMT-320	CNCMT-400	CNCMT-500	CNCMT-630						
Table Dia (mm)		ø200	ø250	ø320	ø400	ø500	ø630						
Table Height in Horizontal (mm)		275	280	330	375	400	480						
Center Height in Vertical (mm)		190	210	270	290	330	440						
Over all Height in Vertical (mm)		317	450	595	648	735	940						
Thru-Hole Dia (mm)		30 ^{H7}	70 ^{H7}	110 ^{H7}	150 ^{H7}	180 ^{H7}	254 ^{H7}						
Width of T-slot (mm)		12 ^{H7}	12 ^{H7}	14 ^{H7}	14 ^{H7}	18 ^{H7}	18 ^{H7}						
Width of Guide Block (mm)		18 ^{H7}	18 ^{H7}	18 ^{H7}	18 ^{H7}	18 ^{H7}	18 ^{H7}						
Servo motor type		Rotating	Tilting (Scale)	Rotating	Tilting (Scale)	Rotating	Tilting (Scale)	Rotating	Tilting (Scale)	Rotating	Tilting (Scale)	Rotating	Tilting (Scale)
	MELDAS	HF-104T	Manual	HF-104T	Manual	HF-204S	Manual	HF-204S	Manual	HF-204S	Manual	HF-354S	Manual
	FANUC	α4 i		α4 i		α12 i		α12 i		α12 i		α22 i	
	SIEMENS	1FK7060		1FK7060		1FK7083		1FK7083		1FK7083		1FK7101	
	HEIDENHAIN	QSY116C		QSY116C		QSY155B		QSY155B		QSY155B		QSY155D	
Gear Ratio		1:90	-	1:90	-	1:180/1:90	-	1:90	-	1:120	-	1:180	-
Min. Increment(degree)		0.001°	1°	0.001°	1°	0.001°	1°	0.001°	1°	0.001°	1°	0.001°	1°
Max. R.P.M. (rpm) (motor : 2000 / rpm)		22.2	-	22.2	-	11.1/22.2	-	22.2	-	16.7	-	11.1	-
Tilting degree		0°~105°		0°~100°		0°~100°		0°~100°		0°~100°		0°~100°	
Rotation axis	Pneu. clamp force(kg·m)(P:5kg / cm ²)	25		47		71		92		125		370	
	Hydro. clamp force(kg·m)(P:20kg / cm ²)	50		94		142		184		250		740	
	Indexing Accuracy (sec.)	20"		15"		15"		15"		15"		15"	
	Repeatability(sec.)	Unidirectional	4"		4"		4"		4"		4"		4"
Bidirectional		8"		8"		8"		8"		8"		8"	
N.W (kgs)		135		220		310		380		450		1000	
Max. Load	Vertical	W=40 kg		W=125 kg		W=150 kg		W=300 kg		W=350 kg		W=500 kg	
	Horizontal	W=80 kg		W=300 kg		W=350 kg		W=500 kg		W=600 kg		W=1000 kg	
Max. Radial Load		F=600 kg		F=1208 kg		F=1375 kg		F=1585 kg		F=1880 kg		F=2080 kg	
		FxL=16 kg·m		FxL=18.2 kg·m		FxL=26 kg·m		FxL=36 kg·m		FxL=89 kg·m		FxL=185 kg·m	
		FxL=20 kg·m		FxL=72 kg·m		FxL=92 kg·m		FxL=100 kg·m		FxL=165 kg·m		FxL=228 kg·m	

※ All specifications can be modified according to customers' requirement.

- Up & backside cable outle is available, slant motor cover also available
- Standard accessory: eye bolts, clamping blocks
- ⊙ Adapting Tailstock→ Refer to P : 19-21
- ⊙ To match AC-/DC-/Stepping-Controller→ Refer to P : 33-35

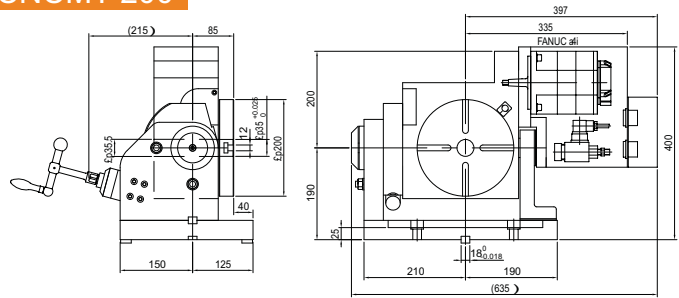
CNCMT-200, 250, 320, 400, 500, 630 CNC MANUAL-TILTING Rotary Table



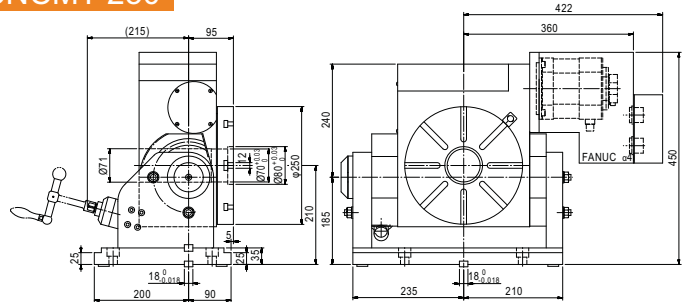
CNCT / CNCMT



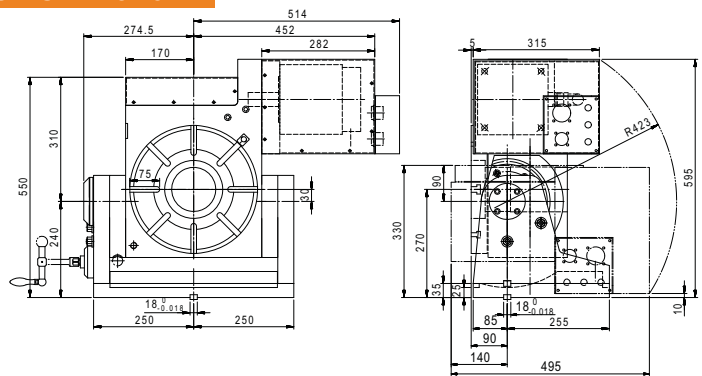
CNCMT-200



CNCMT-250

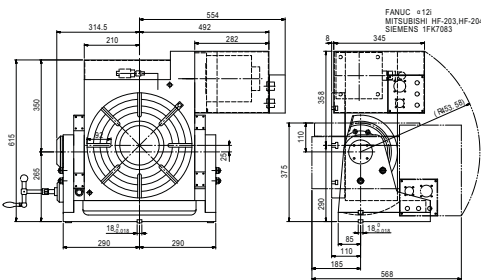


CNCMT-320

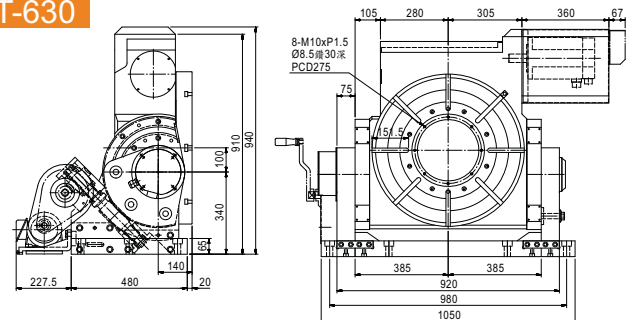


© Motor Position On RightSide

CNCMT-400



CNCMT-630



Accuracy Standards

Unit:mm

MODEL	ITEM	Table top flatness	Parallelism of table top and frame bottom	Runout of table spindle center	Table top runout	Parallelism of tilting axis center line and frame bottom	Parallelism of table top to frame bottom guide block	An encoder measuring instrument should be used for indexing accuracy measurements (Rotating)
CNCMT-201		0.01	0.02	0.01	0.015	0.02	0.02	25"
CNCMT-250		0.01	0.02	0.01	0.015	0.02	0.02	25"
CNCMT-320		0.01	0.02	0.01	0.015	0.02	0.02	15"
CNCMT-400		0.02	0.02	0.01	0.015	0.02	0.02	15"
CNCMT-500		0.02	0.02	0.01	0.015	0.02	0.02	15"
CNCMT-630		0.02	0.02	0.01	0.015	0.02	0.02	15"