



- ⊙ Suitable for the high accuracy machining such as Boring-Milling, Grinding-Machine.
- ⊙ Build-in 2 pieces hirth coupling for positioning, indexing accuracy +/- 3 sec, ensure a long-term operation.
- ⊙ Powerful clamping design, allow heavy cutting and boring.
- ⊙ Clamping / Unclamping by pneumatic, easy operation.
- ⊙ The body is FC-35 cast iron, durable and will last longer without deformation.

MODEL NO : GCT-600

● Type of precision index table

● Size of Table

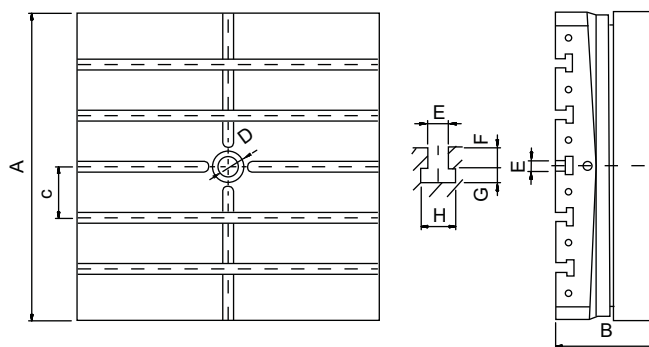


2 PCS hirth coupling

ITEM / MODEL		GCT-301	GCT-450	GCT-600	GCT-700	GCT-800	GCT-1000	GCT-1200
Table size L x W (mm)		300X300	450X450	600X600	700X700	800X800	1000X1000	1200X1200
Height (mm)		140	170	200	220	280	300	340
Spindle hole (mm)		ø30	ø30	ø40	ø40	ø60	ø60	ø80
T-slot (mm)		12	18	20	20	22	22	22
Table rotating		clockwise and counterclockwise						
Table Lifting up & Clamp down stroke (mm)		5	5	5	5	8	8	8
Driving	Longitudinal	Air Pressure 5~8 kg/cm ²						
	Revolving	Manual						
Number of division (degree)(evenly distributed)		15°	1° or 5°					
Max. load weight in theory (kgs)		1200	2400	3400	3400	4500	6000	7000
Allowable load weight (kgs)		500	1000	2000	2000	3000	5000	6000
Clamping capacity (kgs)		-	2200	3200	3200	5400	5400	8100
N.W. (kgs)		90	200	400	600	900	1200	2000

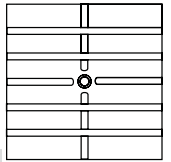
※ All specifications can be modified according to customers' requirement.

GCT-301~1200



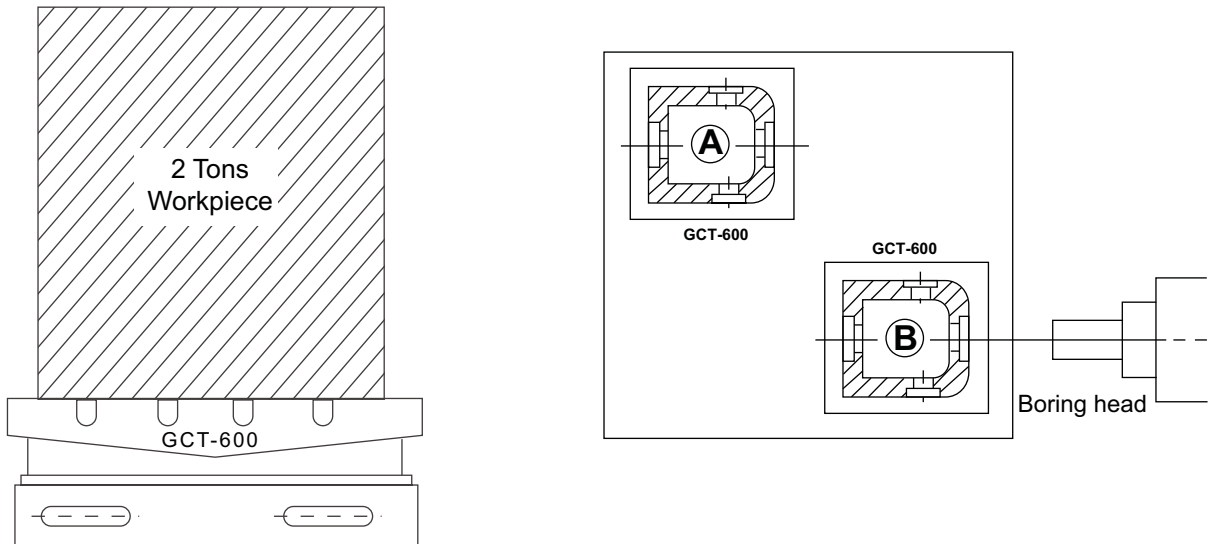
	GCT-301	GCT-450	GCT-600	GCT-700	GCT-800	GCT-1000	GCT-1200
A	300	450	600	700	800	1000	1200
B	140	170	200	220	280	300	340
C	100	100	100	125	100	150	200
D	-	30	40	40	60	60	80
E	12	18	20	20	22	22	22
F	14	16	20	20	23	23	23
G	9	12	14	14	15	15	15
H	23	28	35	35	38	38	38

Precision Index Table



Accuracy Standards								Unit:mm	
ITEM MODEL	Concentricity of center spigot	Flatness of table surface	Table oscillation	Parallelism between bottom and top surfaces	T-slot right angle	Right angle of table side	Concertricity and T-slot side	Test by NIKON "Auto collimator"	
								Divide into 4 equal parts	Divide into 72 equal parts
GCT-301	0.01	0.01	0.01	0.01	0.015	0.015	0.015	±2"	±3"
GCT-450	0.01	0.015	0.01	0.015	0.015	0.015	0.015	±2"	±3"
GCT-600	0.01	0.02	0.015	0.02	0.02	0.02	0.02	±2"	±3"
GCT-700	0.01	0.02	0.015	0.02	0.02	0.02	0.02	±2"	±3"
GCT-800	0.01	0.02	0.015	0.02	0.02	0.02	0.02	±2"	±3"
GCT-1000	0.01	0.03	0.02	0.03	0.03	0.03	0.02	±2"	±3"
GCT-1200	0.01	0.03	0.02	0.03	0.03	0.03	0.02	±2"	±3"

Machining Status



GCT

Allowed Loading Chart

